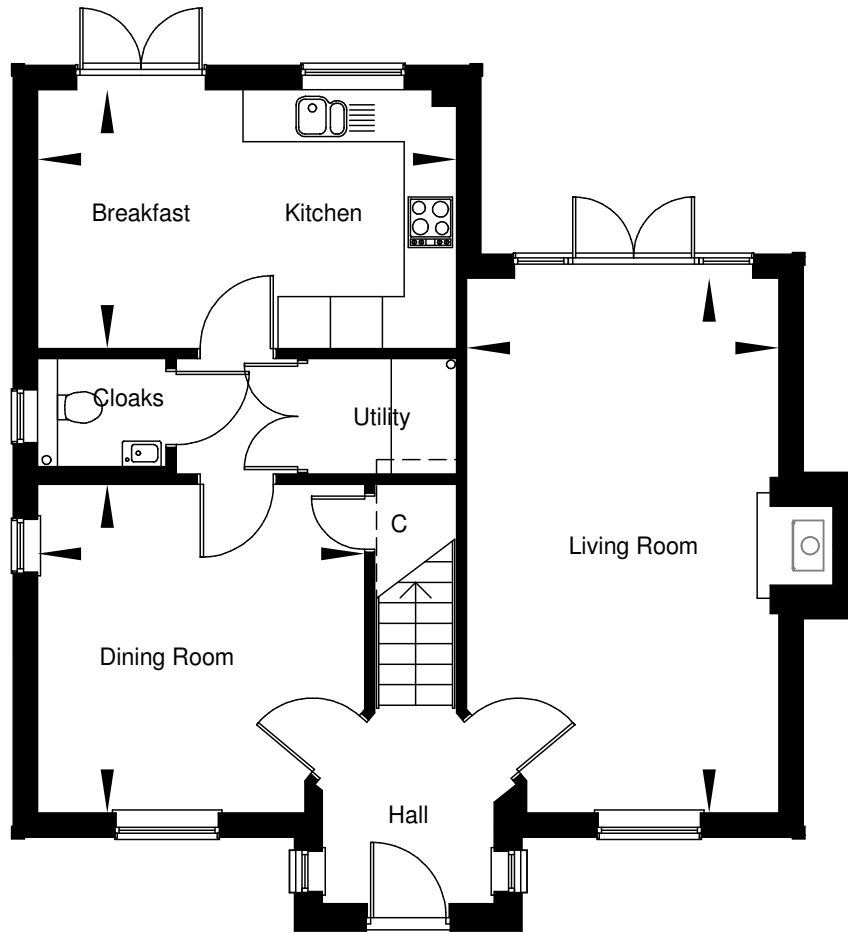


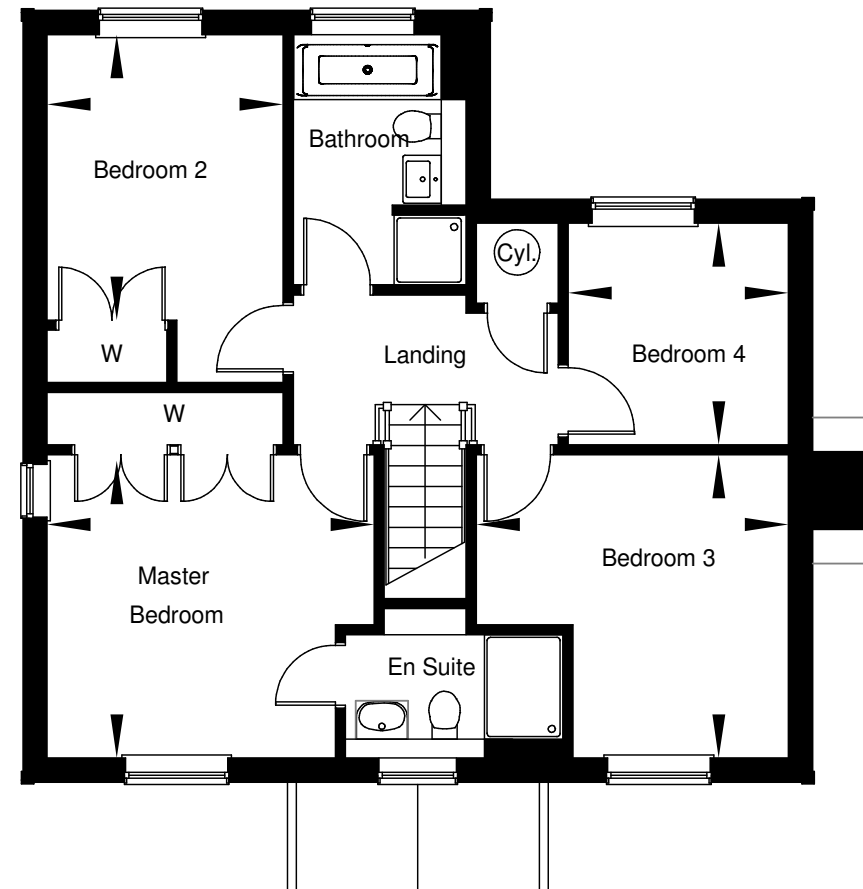


WINDSOR MEADOW
THE CHEVENING - HOME 15



GROUND FLOOR

Living Room	6138mm x 3585mm	20'1" x 11'9"
Dining Room	3775mm x 3755mm	12'4" x 12'3"
Kitchen/Breakfast Room	4810mm x 2975mm	15'9" x 9'9"



FIRST FLOOR

Master Bedroom	3755mm x 3414mm	12'3" x 11'2"
Bedroom 2	3280mm x 2710mm	10'9" x 8'10"
Bedroom 3	3585mm x 3480mm	11'9" x 11'5"
Bedroom 4	2543mm x 2530mm	8'4" x 8'3"

*Please note kitchen layout is indicative only. Please check with the sales team for detailed layout.



Home 15



Typical Millwood interior

KITCHEN FEATURES

- The kitchen is equipped with a comprehensive range of wall and floor cabinets with laminate worktops, upstands and stainless steel splash back.
- Fully integrated appliances to include a 4 ring induction hob, single electric oven, extractor hood, combi microwave oven, fridge/freezer and dishwasher.
- Utility is provided with a laminate work surface and a freestanding washing machine and condenser dryer.
- Ceramic floor tiles to the kitchen/breakfast room and utility.

BATHROOM, EN SUITE AND CLOAKROOM

- Contemporary white suites with chrome fittings.
- Cabinetry to cloakroom and en suite.
- Heated white towel rail provided to the bathroom and en suite.
- Mirror and shaver socket provided to the bathroom and en suite.
- Ceramic wall and floor tiles to the bathroom, en suite and cloakroom.

ELECTRICAL AND MULTIMEDIA

- White switch plates and sockets throughout.
- Recessed down lighters or pendant provided to all rooms.
- TV and BT points are provided to selected rooms with a provision for Sky plus HD (box, dish and subscription not included).
- Power provided to loft area.

CENTRAL HEATING AND HOT WATER

- An efficient gas-fired central heating system, via radiators with thermostatic controls, is provided in conjunction with a pressurised hot water cylinder.

PEACE OF MIND

- Double glazed PVCu windows and doors with multi point locking system.
- External coach lighting provided to all external doors.
- A mains fed smoke alarm is fitted to the hall and landing with a battery backup.

FINISHING TOUCHES

- Vertical five panel moulded internal doors with chrome fittings finished in a white gloss with half glazed doors to the kitchen/breakfast room, living room and dining room.
- French doors provided to the rear of kitchen/breakfast room and living room.
- Brick fireplace with bressumer beam and wood burning stove provided to the living room.
- White painted softwood staircase with oak handrail.
- Shelf and hanging space provided to wardrobe(s) in master bedroom and bedroom 2.
- All internal joinery will consist of attractive skirtings and architraves finished in a white gloss.

EXTERNAL FEATURES

- Landscaped front garden with feature planting.
- Rear garden is provided with top soil and an area of patio.
- External tap provided.
- Garage to have manual opening door, power and light.

AFTERCARE

- Millwood Designer Homes has a dedicated Customer Aftercare Department providing peace of mind for two years after you move into the property.

SERVICES

- Mains electricity, gas and pumped foul water drainage.

GUARANTEES

- All the homes come with a ten-year Premier warranty.

TENURE

- Freehold

PEA = B





WINDSOR MEADOW, NAPOLEON DRIVE, MARDEN, KENT Sat Nav: TN12 9TR

A development of 86 houses comprising a mix of 2 & 3 bedroom terraced and semi-detached homes and 3, 4 & 5 bedroom detached homes.

T: 01622 832576 | E: windsormeadow@mdh.uk.com | www.millwooddesignerhomes.co.uk



MILLWOOD
designer homes limited

Computer generated image