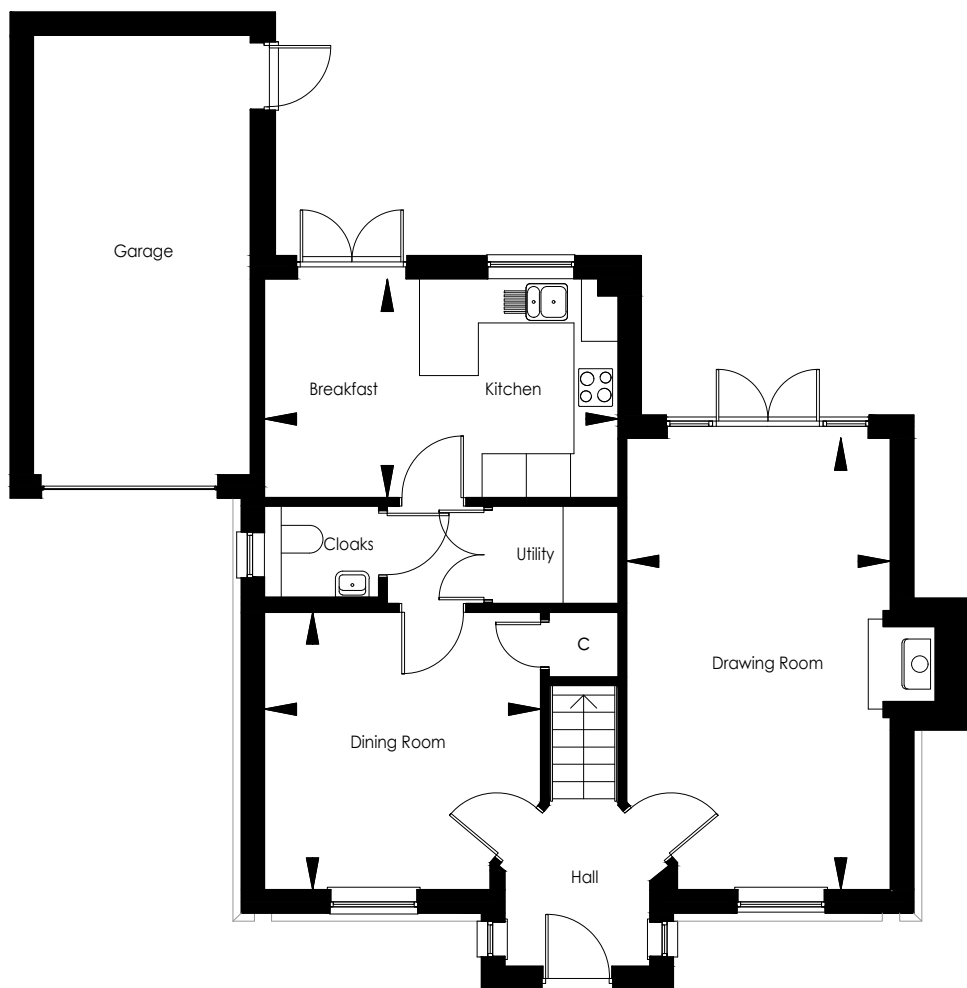


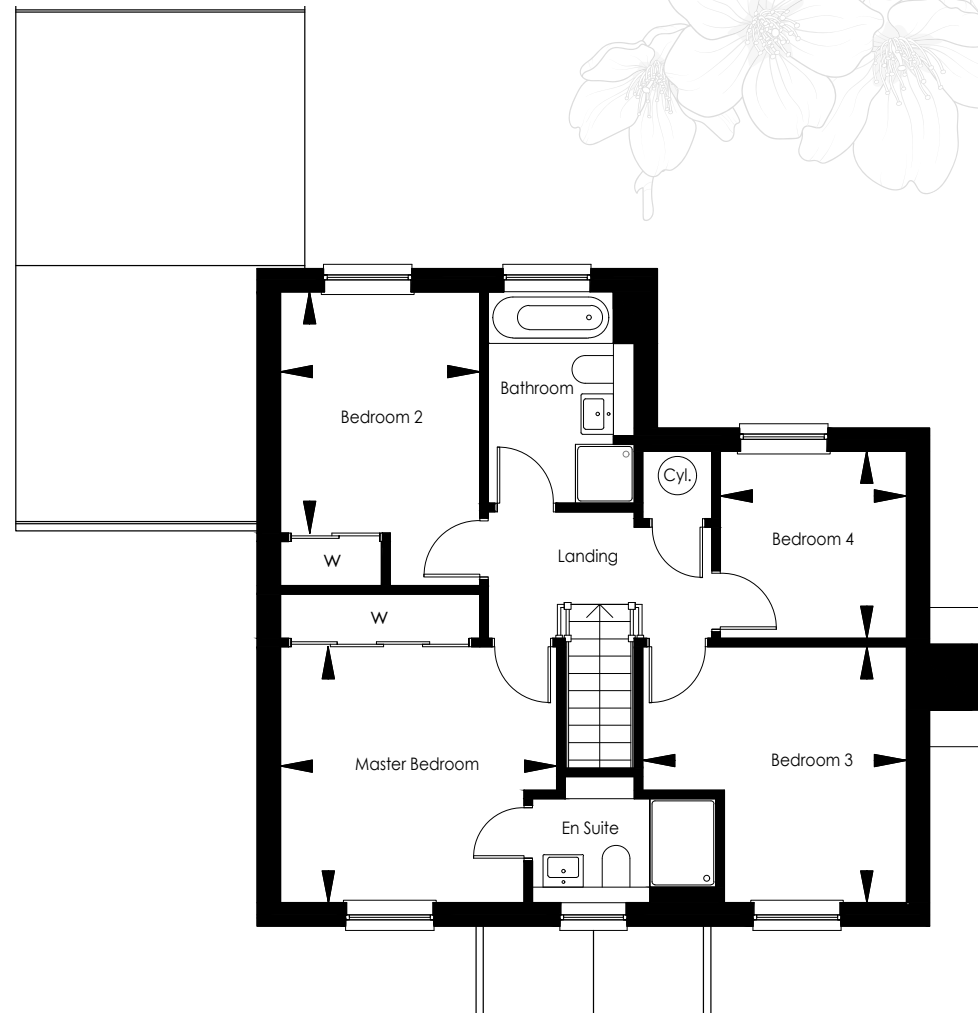
CHERRY TREE LANE  
The Chevening  
Home 7





## GROUND FLOOR

Drawing Room	6138mm x 3585mm	20'2" x 11'9"
Dining Room	3775mm x 3755mm	12'5" x 12'4"
Kitchen / Breakfast Room	4810mm x 2975mm	15'9" x 9'9"



## FIRST FLOOR

Master Bedroom	3755mm x 3480mm	12'4" x 11'5"
Bedroom 2	3280mm x 2710mm	10'9" x 8'11"
Bedroom 3	3585mm x 3480mm	11'9" x 11'5"
Bedroom 4	2543mm x 2530mm	8'5" x 8'4"

\*Please note kitchen layout is indicative only. Please check with the sales team for detailed layout.





## KITCHEN FEATURES

- The kitchen is equipped with a range of wall and floor cabinets with laminate worktops and upstands, full height behind hob.
- Fully integrated appliances to include a 4 ring induction hob, single electric oven, extractor, combi microwave oven, fridge/freezer and dishwasher.
- Utility cupboard is provided with a laminate work surface with freestanding washing machine and tumble dryer.

## BATHROOM, EN SUITE AND CLOAKROOM

- Contemporary white suites with chrome fittings.
- Cabinetry to cloakroom and en suite.
- Heated white towel rail provided to the bathroom and en suite.
- Mirror and shaver socket provided to the bathroom and en suite.
- Ceramic wall tiles to the bathroom, en suite and cloakroom.

## ELECTRICAL AND MULTIMEDIA

- White switch plates and sockets throughout.
- Recessed down lighters or pendant provided to all rooms.
- TV and BT points are provided to selected rooms with a provision for Sky plus HD (box, dish and subscription not included).
- CAT6 cabling from master BT point (understairs cupboard) to TV position in the drawing room and master bedroom to allow for hard wired internet access to these locations only. Other locations to rely on wireless internet access (subscription not included).
- Power provided to loft area.

## CENTRAL HEATING AND HOT WATER

- An efficient gas-fired central heating system, via radiators with thermostatic controls, is provided in conjunction with a pressurised hot water cylinder.

## PEACE OF MIND

- Double glazed PVCu windows and doors with multi point locking system.
- External lighting provided to all external doors.
- A mains fed smoke alarm is fitted to the hall and landing with a battery backup.

## FINISHING TOUCHES

- Vertical five panel moulded internal doors with chrome fittings finished in a white gloss with half glazed doors to the kitchen/breakfast room, dining room and drawing room.
- French doors provided to the rear of kitchen/breakfast room and drawing room.
- White painted softwood staircase with oak handrail.
- Brick fireplace with bressumer beam and wood burning stove provided to the drawing room.
- Sliding mirror fronted wardrobe with shelf and hanging space provided in the master bedroom and bedroom 2.
- All internal joinery will consist of attractive skirtings and architraves finished in a white gloss.
- Karndean flooring fitted to hallway, kitchen/breakfast room, utility cupboard, inner hallway, cloakroom, bathroom & en suite.

## EXTERNAL FEATURES

- Landscaped front garden with feature planting.
- Rear garden is provided with top soil and an area of patio.
- External tap provided.
- Garage to have manual opening door with power and light.

## AFTERCARE

- Millwood Designer Homes has a dedicated Customer Aftercare Department providing peace of mind for two years after you move into the property.

## SERVICES

- Mains electricity, gas and pumped foul water drainage.
- BT Fibre Broadband speed up to 300mb (subject to connection and subscription).

## GUARANTEES

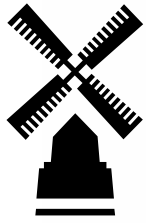
- All the homes come with a ten-year LABC warranty.

## TENURE

- Freehold.

PEA = B





**MILLWOOD**  
designer homes limited



**CHERRY TREE LANE**  
EWHURST, SURREY

A collection of 1 to 5 bedroom new homes | Sat Nav: GU6 7RJ  
T: 01483 677663 | E: [cherrytreelane@mdh.uk.com](mailto:cherrytreelane@mdh.uk.com) | [www.millwooddesignerhomes.co.uk](http://www.millwooddesignerhomes.co.uk)