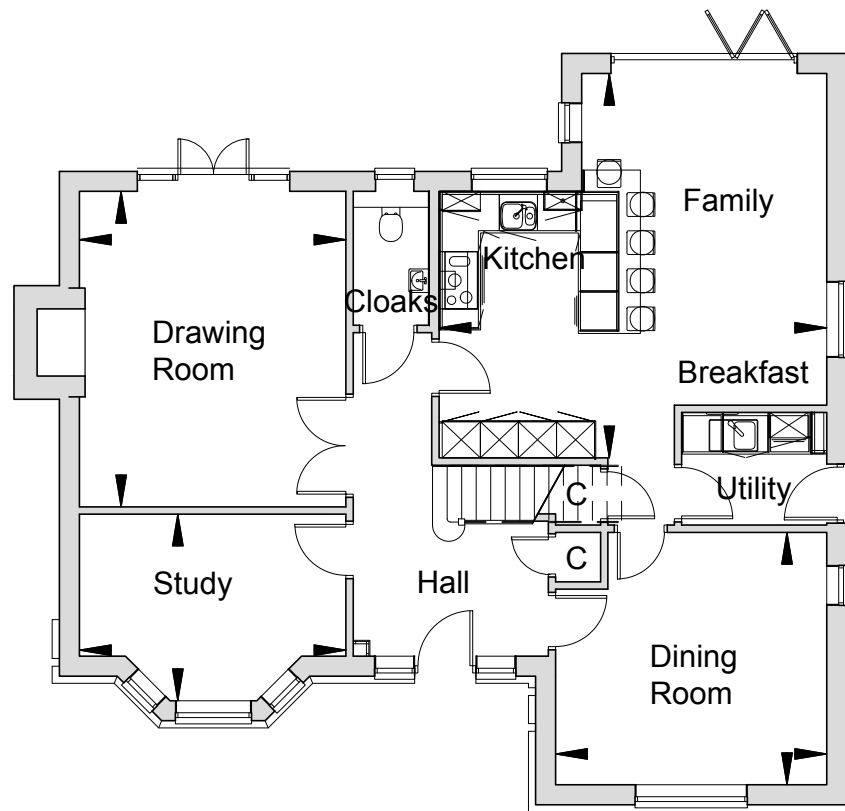




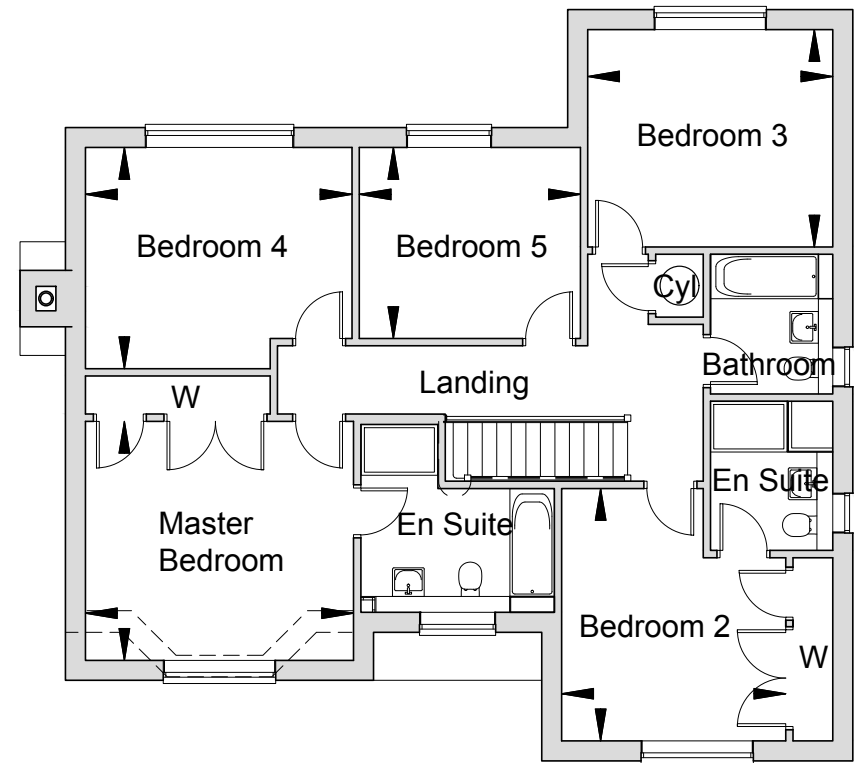
Computer generated image

BRAMBLEDOWN  
THE PIERREMONT - HOMES 4 & 8



### GROUND FLOOR

|                               |                 |                  |
|-------------------------------|-----------------|------------------|
| Kitchen/Breakfast/Family Room | 6106mm x 6057mm | 20' 0" x 19' 10" |
| Dining Room                   | 4270mm x 3975mm | 14' 0" x 13' 0"  |
| Drawing Room                  | 4970mm x 4199mm | 16' 3" x 13' 9"  |
| Study                         | 4199mm x 2939mm | 13' 9" x 9' 7"   |



### FIRST FLOOR

|                |                 |                  |
|----------------|-----------------|------------------|
| Master Bedroom | 4224mm x 3765mm | 13' 10" x 12' 4" |
| Bedroom 2      | 3975mm x 3530mm | 13' 0" x 11' 6"  |
| Bedroom 3      | 3860mm x 3425mm | 12' 7" x 11' 2"  |
| Bedroom 4      | 4199mm x 3484mm | 13' 9" x 11' 5"  |
| Bedroom 5      | 3483mm x 3009mm | 11' 5" x 9' 10"  |

\*Please note kitchen layout is indicative only. Please check with the sales team for detailed layout.

Typical Millwood Interior



#### KITCHEN FEATURES

- The kitchen is equipped with a range of wall and floor cabinets with Silestone worktops, up stands and stainless steel splash back.
- Fully integrated appliances to include a 5 ring induction hob, 2 x single electric ovens, extractor, microwave, full height fridge, full height freezer, dishwasher and wine cooler.
- Utility room is provided with a laminate work surface and space for freestanding washing machine and tumble dryer.
- Ceramic floor tiles to the kitchen/breakfast/family room and utility.

#### BATHROOM, EN SUITES AND CLOAKROOM

- Contemporary white suites with chrome fittings.
- Cabinetry to cloakroom, bathroom and master en suite.
- Heated chrome towel rail provided to the bathroom and en suites.
- Mirror and shaver socket provided to the bathroom and en suites.
- Ceramic wall and floor tiles to the bathroom, en suites and cloakroom.

#### ELECTRICAL AND MULTIMEDIA

- Chrome switch plates and sockets throughout.
- Recessed down lighters or pendent provided to all rooms.
- TV and BT points are provided to selected rooms with a provision for Sky plus HD (box, dish and subscription not included).
- Power provided to loft area.

#### CENTRAL HEATING AND HOT WATER

- An efficient gas-fired central heating system, via radiators with thermostatic controls, is provided in conjunction with a pressurised hot water cylinder.

#### PEACE OF MIND

- An alarm system is provided to ground floor and landing with PIRs.
- Double glazed PVCu windows and doors with multi point locking system.
- External coach lighting provided to all external doors.
- A mains fed smoke alarm is fitted to the hall and landing with a battery backup.

#### FINISHING TOUCHES

- Vertical five panel moulded internal doors with chrome fittings finished in a white gloss with half glazed doors to the kitchen/breakfast/family room, drawing room and dining room.
- French doors provided to the drawing room.
- Bi-fold doors provided to the kitchen/breakfast/family room.
- Brick fireplace with bressumer beam and wood burning stove provided to the drawing room.
- White painted softwood staircase with oak handrail.
- Shelf and hanging space provided to wardrobe in master bedroom and bedroom 2.

- All internal joinery will consist of attractive skirtings and architraves finished in a white gloss.

#### EXTERNAL FEATURES

- Landscaped front garden with feature planting.
- Rear garden is provided with top soil and an area of patio.
- External tap provided.
- Garage to have electronically operated 'up and over' doors with remote control, power and light.

#### AFTERCARE

- Millwood Designer Homes has a dedicated Customer Aftercare Department providing peace of mind for two years after you move into the property.

#### SERVICES

- Mains electricity, gas and pumped foul water drainage.
- BT Fibre Broadband speed upto 300mb.

#### GUARANTEES

- All the homes come with a ten-year Premier warranty.

#### TENURE

- Freehold.

PEA = B

This brochure has been produced for your guidance only. Whilst every care has been taken, its accuracy cannot be guaranteed. Millwood Designer Homes Ltd reserves the right to change the specification without prior notice. The photographs shown within this brochure are indicative of the quality of a Millwood Designer home and do not necessarily relate to the housetypes.



Typical Millwood Interior



## BRAMBLEDDOWN, CRIPPLE STREET, MAIDSTONE, KENT

Brambledown is an elegant new development of 36 houses comprising a mix of 2 & 3 bedroom semi-detached, 2 & 3 bedroom chalet bungalows and 4 & 5 bedroom detached homes. Each will enjoy the finest fixtures and fittings and be finished to the high standards Millwood are renowned for.

Sat Nav: ME15 6DN



**MILLWOOD**  
designer homes limited

T: 01622 410500

E: [brambledown@mdh.uk.com](mailto:brambledown@mdh.uk.com)  
[www.millwooddesignerhomes.co.uk](http://www.millwooddesignerhomes.co.uk)